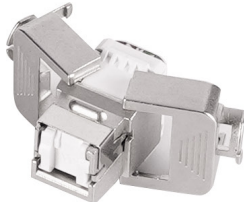


P/N : AL-2122S



P/N : AL-2124S



Applications :

- 10 BASE-T (IEEE 802.3)
- 100 BASE-TX (IEEE 802.3U)
- 1000 Base - T (IEEE 802.3ab)
- Data center, VoIP, ISDN, POE, CCTV and others
- To mounting on patch panel or face plate

Standards :

- ANSI/TIA-568-C.2 Category 6
- ISO IEC-11801
- IEEE 802.3ab
- EMC Compliant
- IEC 60603-7-4

Specifications :

- Voltage rating : 125 VAC RMS
- Current rating : 1.5 A
- Contact resistance : 100 mΩ (Max)
- Insulation resistance : 500 MΩ (Min) @500 VDC
- Dielectric strength : 750 VAC RMS 60Hz, 1min
- Termination resistance : 35 milli ohms max
- Insertion force : 20N max (IEC 60603-7-4)
- Retention strength : 7.7 kg between jack and plug
- Operating temperature : -10 °C to 60 °C
- Life mating cycles RJ45 contact : 750 cycles min (ISO/IEC 11801, IEC 60603-7-4)
- IDC terminal : Suitable for 22-26 AWG stranded and solid wire, compatible with both 110 & krone punch down tools

Material :

- RJ45 jack :
 - Housing : Zinc alloy
 - RJ45 jack contact :
 - Material : Phosphor bronze nickel plated
 - Finish : 50 micro-inch gold plated on plug contact area
- IDC :
 - Housing : PC with termination wire guide
 - Terminal : Phosphor bronze nickel plated
 - IDC Cap : PC
 - PCB : FR4, UL

Ordering Information :

P/N	Descriptions
AL-2122S	Shielded CAT6 RJ45 Modular Jack, Slim Tool Free "ALFA BASE"
AL-2124S	Shielded CAT6 RJ45 Modular Jack, Slim, Tool Free, Auto Shuttle "ALFA BASE"